

2026

SCOTT COUNTY FAIR

FFA SAFE TRACTOR OPERATOR'S CONTEST

1. **Eligibility.** Winners of the FFA Champions trophy are ineligible to compete in the FFA Safe Tractor Operators Contest
2.
 - a. Each contestant must have reached their 14th birthday, but not their 19th birthday by the opening day of the Scott County Fair.
 - b. **Must** have a **state drivers license** or **learners permit in their possession.** **Contestants under age for a regular driver's license or permit must have IN THEIR POSSESSION the [new exemption certificate authorized under the U.S. Department of Labor order on Hazardous Occupations in Agriculture](#)**
 - c. Each contestant in the state MUST REPRESENT and FFA Chapter
 - d. **Three FFA members** per chapter may enter. Each FFA entrant must be certified by their chapter advisor.
 - e. The scores of three members will be combined for a team score
3. The contest is a one-day event, held Sunday July 26. Registration begins 8:30am out by the track; written exams at 9:00, followed by Safety and Maintenance check, two-wheel driving event at 10:00am
4. **Awards**
 - a. **Ribbons.** FFA contestants that complete all five events will be awarded a ribbon: blue, red, or white based on their performance
 - b. **Trophies:** The FFA champion tractor operators in each class- Novice & Advanced, will each be awarded trophies.

SCOTT COUNTY FAIR

FFA SAFE TRACTOR OPERATOR'S CONTEST

RULES AND INFORMATION

A. PURPOSE

- a. To promote and encourage safe and skillful farm tractor operations

B. ELIGIBILITY

- a. Each contestant must have reached their 14th birthday, but not their 19th birthday by January 1 of the year of the contest.
- b. Each contestant must have a state driver's license or permit in his/hers possession
- c. Contestants under the age for a regular driver's license or permit must have in their possession the exemption certificate authorized under the U/S/ Department of Labor order on Hazardous Occupations in Agriculture
- d. Each contestant in the contest must represent an FFA Chapter. Three (3) FFA members per chapter may be entered in the Scott County FFA Safe Tractor Driving Contest. Each FFA entrant must be certified by a chapter advisor.

1. **Novice**

2. **Advanced**

C. ENTRY PROCEDURE

- a. Contestants must complete the official contest application included in this book. Entries must be mailed to the contest coordinator. No entries will be accepted unless postmarked on or before the Monday prior to the opening day of the fair.

D. OUTLINE OF CONTEST EVENTS

1. Written Examination
2. Tractor Safety
3. Practical Examination (routine daily check-up)
4. Two-Wheel Driving Event
5. Four-Wheel Driving Event

E. AWARDS

- a. All FFA contestants completing all five (5) events will be awarded a ribbon based on performance (blue=1st, red=2nd, white=3rd)

F. TRANSPORTATION

- a. Contestants should arrange their transportation through the person certifying their entry (advisor)

G. TRACTOR SELECTION

New tractors will be provided by manufacturers for the state contest. The tractors may be either two-wheel drive or front-wheel assist (FWA) from personal donors, Kibble and/or Lanos Equip. A short practice period will be allowed before each section of the contest on a tractor similar to the one used in that section or event (under the guidance of the manufacturer's representative), so each contestant can acquire the "feel" of the tractor to be used. Contestants will be briefed in small groups on the controls and operations of each type

of tractor before being allowed to drive in the practice session. Contestants will not be allowed to drive in a contest even with a particular tractor until they have satisfied the manufacturer's representative that they can safely handle the tractor in question. Contestants will not be allowed to drive through any part of the contest course during practice.

H. SCORING

The penalty scoring system will be used. Placing will be based on the total number of penalty points accumulated. The highest placing will go to contestants with the lowest scores. Each event will have a time limit, and contestants will be stopped when time is called.

Written Examination. Each unanswered question and each incorrect answer will draw 20 penalty points. No penalty points will be accumulated for time used, but all contestants will be stopped at the end of the 30-minute time limit.

Practical Examination (routine daily safety & maintenance check-up). Undetected items needing attention and incorrect items indicated by contestants as needing correction will each add 50 penalty points. Penalty points will not accumulate for time used in this event, but safety violations will add penalty points.

Driving Events. Penalty points for safety violations, hit markers, etc, during driving events will be so severe that the importance of speed will be minimized. Contestants will be stopped if they do not complete any particular event within the time limit. Penalty points for the time used (one per second) will accumulate in each of the driving events.

The individual event scoring and layout sheets outline time and measurement scoring details. **The penalty points accumulated for time used plus those from final measurements, will not exceed 520 points for any one driving event.** Penalty points assessed for safety violations and hit markers are assigned separately and will be added to the 520-point maximum for each event.

Measurement System. Two and Four wheel events: penalty points for these events will depend on the contestant's progress through the course at the time the four (4) minute limit is reached. See the appropriate Scoring Guide Sheet for details.

I. JUDGES AND RULES INTERPRETATION COMMITTEE

One of the judges in each event will be designated as head judge. Judges will be assigned to specific events. A rules interpretation committee will handle all problems of rules interpretations arising before or during the contest. The rules interpretation committee reserves the right to make revisions depending on contest conditions. No questions will be considered if submitted later than 14 minutes after the last contestant has finished the events in question. Decisions of the rules interpretation committee are final. Competition of this committee will consist of the Contest Superintendent, the head judge of the event in question, and one other head judge.

All rules and registration inquiries should be sent to the Superintendent in charge of this contest.

References:

- American Association for Vocational Instructional Material
- Safe Tractor Operations and Safety Care
- Selecting and Storing Fuels and Lubricants
- John Deere
- Fundamentals of Machine Operation
- Tractor Safety Prevention Maintenance
- Minnesota Extension Service, 3 Coffey Hall, St. Paul, MN
- Safe Operation of Agricultural Equipment 4H-BU-0307

DESCRIPTION OF EVENTS

a. WRITTEN EXAMINATION-30 MINUTES

50 multiple choice questions covering safety and technical applications. 20 penalty points assessed for each question unanswered or answered incorrectly.

b. PRACTICAL EXAMINATION (ROUTINE DAILY CHECK-UP)-4 MINUTES

Inspection of tractor for maintenance and safety items. Basis for selecting items will be a routine daily check-up. Contestants must be prepared to diagnose either gasoline or diesel field tractors. Tractors are not to be started by contestants. Exams will be conducted away from the driving event site, and given to one contestant at a time.

A new tractor will be used, with faulty items prepared by the judges preceding the contest. No more than 10 items will be wrong or faulty.

Contestants will not be allowed to inspect the contest tractor prior to the exam. They will be permitted to ask questions about the location of specific tractor parts prior to taking the exam. (See scoring sheet for more information.)

Contestants will indicate to the judges each item he/she finds needing correction, based on good tractor maintenance or safety principles.

c. TWO WHEEL EVENT-4 MINUTES

d. FOUR WHEEL EVENT- 4 MINUTES

Special conditions common to each of the driving events: when ready to begin driving (gear shift in park or neutral; engine idling; brakes locked if tractor equipped with brake locking system, PTO disengaged), contestants must notify timing officials. The judge will give the starting signal and the timing will begin.

Upon starting signal, contestants will drive the course outlined in this book. After backing into the shed, gear must be moved to park (or neutral, with clutch engaged and brakes locked), and engine turned off. Timing ends when the engine is shut off. (See Two Wheel Event Scoring Sheet and Scoring Guide Sheet, and Four Wheel Event Scoring Sheet and Guide for more information.)

SAFETY

Rules listed will apply in this contest. Contestants will be scored on safety any time they are operating tractors. This includes the practice period as well as before, during and after the practical examination and driving events.

SAFE TRACTOR DRIVING RULES

The following rules are offered as a guide for safe tractor operation. Safety judges will be guided by, but not limited to, the scope or coverage of the following:

1. When mounting the tractor, set brakes or place the gear shift lever in park position before starting the engine. Tractor equipped with a shift lever and clutch should have shift in neutral, disengaged clutch, and lock brakes
2. Place the PTO lever in neutral before starting the engine. PTO should be disengaged at all times except when in use
3. Start and stop gently. Avoid careless or sudden starts and stops which tend to "bounce" front wheels off the ground, or cause rear wheels to "dig in".
4. When the contestant tractor is equipped with a clutch, the contestant must avoid unnecessary slipping of the clutch. The operator's foot or hand may remain on the clutch, but "riding" the clutch is to be avoided.
5. Release brakes before driving the tractor.
6. Tractors should be kept in gear while driving. Never shift into neutral or disengage the clutch to coast part of the way.
7. Ride on a tractor seat or stand on a platform. Never ride on the drawbar of the hitch of the implement being drawn.
8. Reduce speed to safe level before making a turn or applying one brake
9. Drive a tractor at speeds slow enough to ensure safety for yourself and contest officials.
10. Avoid short turns, which will foul implement against the tractor wheel.
11. Do not permit extra riders on tractors at any time.
12. Bring tractor to a complete stop before dismounting
13. Mount and dismount the tractor properly; use steps if provided by the manufacturer.
14. Lock brakes before dismounting. Shift levers must be moved to park position on a tractor not equipped with a brake locking system.
15. Road gear should not be used during the practice or driving periods. Any gear that will permit ground speed of 10 miles per hour or greater will be considered road gear.
16. When leaving the tractor, move the shift lever into park position (or neutral, with clutch engaged), set brakes and turn off engine. (The sequence of the operation does not necessarily need to be followed so long as all operations are accomplished in a safe manner)
17. Clothing should have snug fitting cuffs. Avoid loose fitting or baggy clothing.
18. Smoking will not be permitted, in accordance with the FFA Code of Ethics.
19. All **Routine Daily Check-up Maintenance and Safety Scoring Sheets & Event course details are subject to change as the Advisor sees fit.**

PRACTICAL EXAMINATION

Routine Daily Check-up Maintenance and Safety Scoring Sheet

Name of Judge: _____ Contestant # _____ Score _____

The judge will select ten (10) items and set up the tractor accordingly. Either diesel or gasoline fueled units may be used, depending on availability, etc.).

Suggested or sample items (these will not be provided at the contest)

1. Air cleaner needs cleaning
2. Air cleaner oil level low
3. Air cleaner cartridge needs replacement
4. Air intake clogged
5. Battery cables loose
6. Battery level low (one or more cells)
7. Brakes not set and locked
8. Crankcase oil level low
9. Distributor cap loose or not properly in place
10. Fan or power steering belt loose
11. Fuel filter needs replacement
12. Fuel tank cap missing
13. Hydraulic systems fluid level low
14. Injector line leaking
15. Light or lights not operational
16. Radiator cover not properly attached
17. Radiator level low
18. Safety lights not operable
19. Seat dangerously loose
20. Sediment bowl needs cleaning
21. Spark plug wire disconnected
22. Tire pressure low (visually evident)
23. Transmission not in neutral
24. Transmission oil level low
25. Other

SCORING

Fifty (50) points for each item missed or incorrectly listed. Contestants must be stopped at the end of four (4) minutes, but no penalty points will accumulate for time used.

Number of items missed or incorrectly listed x 50 = (score).

Time: _____ # minutes _____ # seconds

Time: _____ # minutes _____ # seconds

TWO WHEEL EVENT Scoring Sheet

Name of Judge: _____ Contestant # _____ Score _____

1. Softballs dislodged _____ x 50 = _____

2. Knocking stake out of line (so ball will not stay on top)
Additional penalty. Contestant will be disqualified for driving over any
portion of contest stake or line rather than reversing direction to clear
tractor or implement. _____ x 100 = _____

3. Tractor engine stalled _____ x 10 = _____

4. Time penalty (240 pt. max) [total seconds] _____ x 1 = _____

Time: _____ # minutes _____ # seconds

5. Distance (280 pt. max.) or progress through course [see Two Wheel event scoring
diagram]

Zone I 280 pt. x 1 = _____

Zone II 200 pt. x 1 = _____

Zone III 120 pt. x 1 = _____

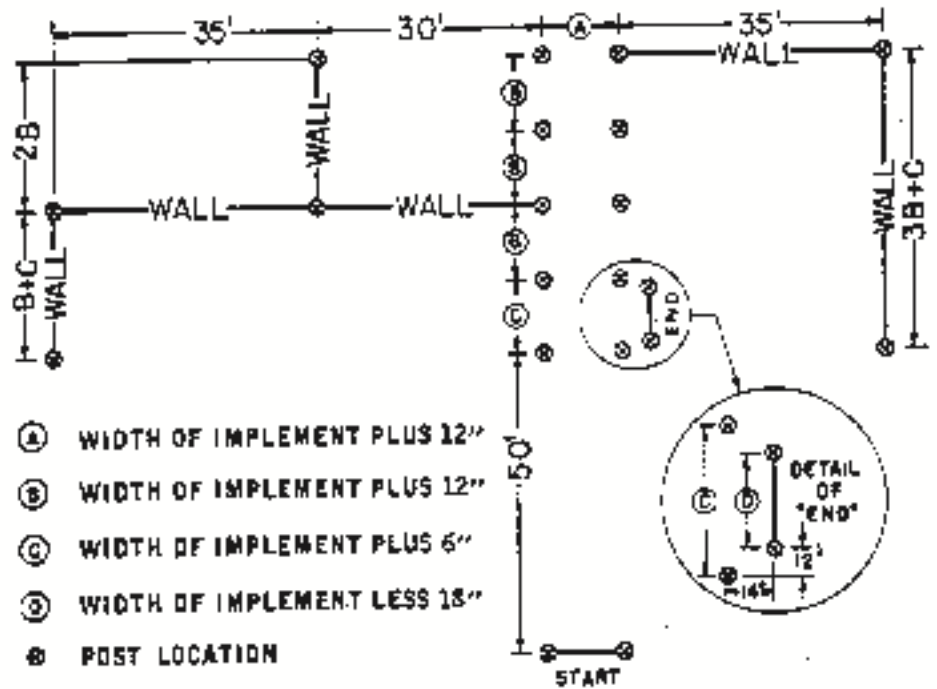
Zone IV 120 pt. max.

Distance (over 2 inches) between implement and closest of the two (2) rear stakes.

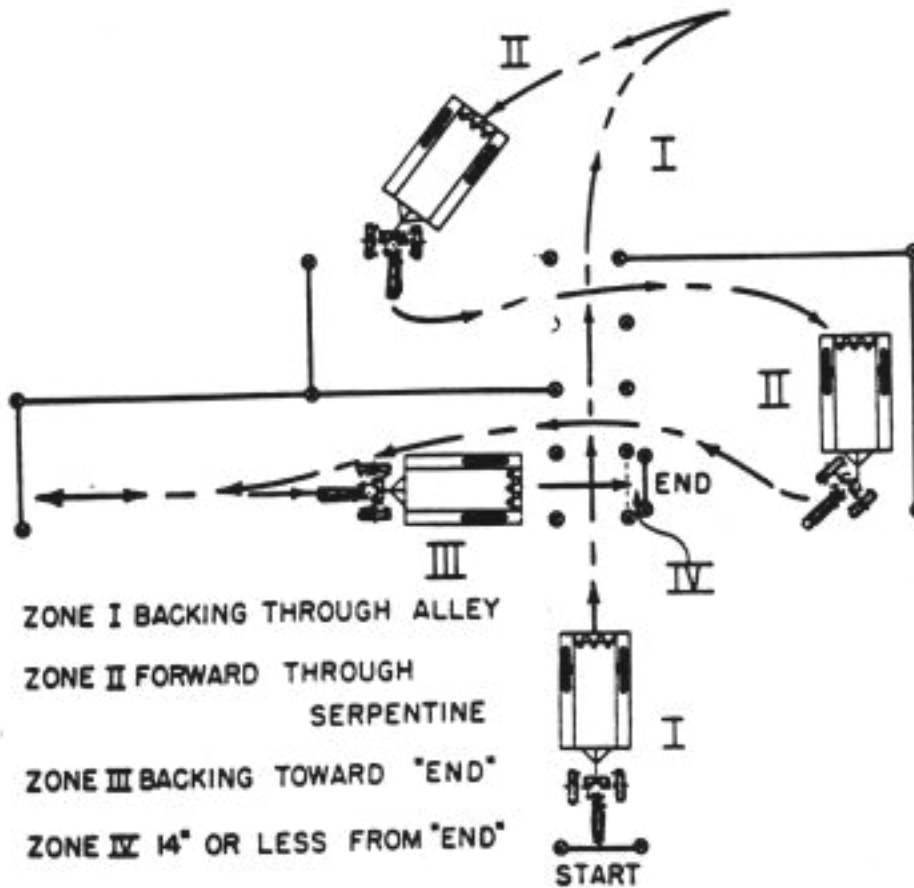
SAFETY SCORE _____ x 10 = _____

TOTAL PENALTY POINTS _____

TWO WHEEL EVENT COURSE LAYOUT



TWO WHEEL EVENT SCORING DIAGRAM



FOUR WHEEL EVENT Scoring Sheet

Name of Judge: _____ Contestant # _____ Score _____

1. Softballs dislodged _____ x 50 = _____

2. Knocking stake out of line (so ball will not stay on top)
 Additional penalty. Contestant will be disqualified for driving over any
 portion of contest stake or line rather than reversing direction to clear
 tractor or implement. _____ x 100 = _____

3. Tractor engine stalled _____ x 10 = _____

4. Time penalty (240 pt. max) [total seconds] _____ x 1 = _____

Time: _____ # minutes _____ # seconds

5. Distance (280 pt. max.) or progress through course [see Two Wheel event scoring diagram]

Zone I 280 pt. x 1 = _____

Zone II 200 pt. x 1 = _____

Zone III 120 pt. x 1 = _____

Zone IV 120 pt. max.

Distance (over 2 inches) between implement and closest of the two (2) rear stakes.

SAFETY SCORE _____ x 10 = _____

TOTAL PENALTY POINTS _____

TRACTOR OPERATOR'S CONTEST

Safety Scoring Sheet

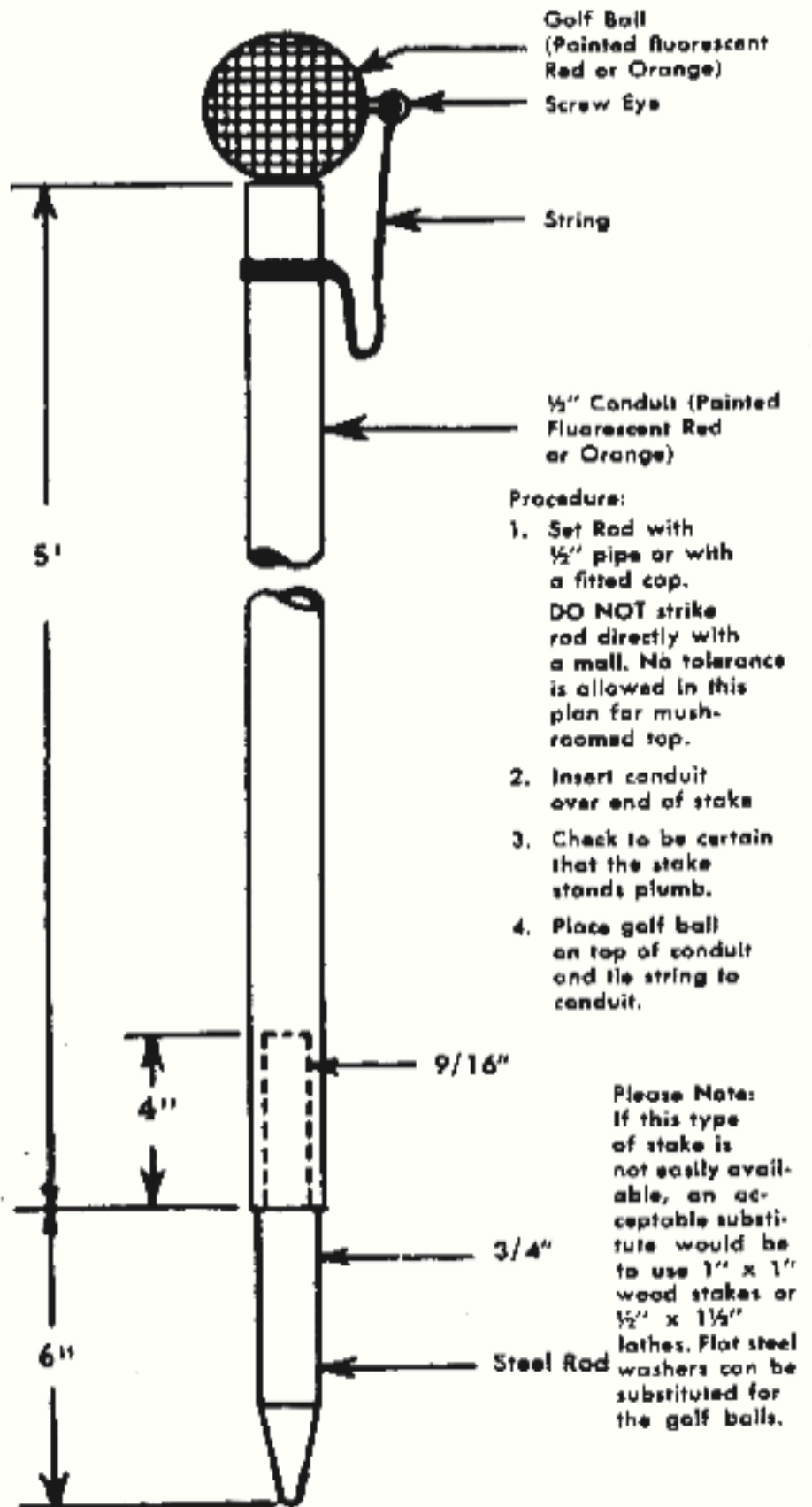
Name of Judge: _____ Contestant # _____ Score _____

	Practice	II	III	IV		
Starting tractor while in gear	_____	_____	_____	_____	x50	= _____
Failure to disengage clutch when starting engine	_____	_____	_____	_____	x25	= _____
Failure to disengage PTO when starting engine	_____	_____	_____	_____	x50	= _____
Failure to engage clutch gently*	_____	_____	_____	_____	x50	= _____
Skidding or spinning	_____	_____	_____	_____	x100	= _____
Fouling the implement	_____	_____	_____	_____	x50	= _____
Operating at unsafe speeds	_____	_____	_____	_____	x100	= _____
Moving tractor with one or both wheel brakes locked	_____	_____	_____	_____	x10	= _____
Failure to shift into park (or neutral with clutch engaged) before dismounting	_____	_____	_____	_____	x100	= _____
Failure to lock brakes before dismounting *	_____	_____	_____	_____	x100	= _____
Failure to bring tractor to a full stop before dismounting	_____	_____	_____	_____	x100	= _____
Smoking	_____	_____	_____	_____	x100	= _____
Other (list or explain)	_____	_____	_____	_____	x__	= _____
_____	_____	_____	_____	_____		
_____	_____	_____	_____	_____		
_____	_____	_____	_____	_____		
_____	_____	_____	_____	_____		

TOTAL PENALTY POINTS

* Where possible: i.e. within limitations of the condition or design of contest tractor.

STAKE PLAN FOR TRACTOR OPERATORS CONTEST



SCOTT COUNTY FAIR SAFE TRACTOR OPERATORS CONTEST APPLICATION

Name

(Last) (First) (MI)

Birthdate _____ Age (at contest time) _____

State Drivers License or Learners Permit No. _____

Child Labor Law Exemption Certificate No. _____

Parent/Guardian

(Last) (First) (MI)

Contestant's Home Address

City _____ Zip Code _____

Representing _____ FFA Chapter (City) _____

SAFETY PLEDGE

I hereby agree to abide by all rules of safe and prudent conduct during this contest. I realize that I may be disqualified by any contest official for any violation endangering contest officials, spectators, other contestants, or myself.

Signed _____
(Contestant)

CERTIFICATION

I hereby certify that this contestant has met the eligibility requirements as set forth in the current Minnesota Safe Tractor operators Contest Bulletin and that _____ contestants from our local chapter competed in an elimination contest. Our contest was held at _____ on _____

Signed (Ag. Instr) _____ Date _____

_____ School _____

City _____ Zip Code _____

MAILING INSTRUCTIONS

All entries **MUST BE POSTMARKED** on or before the Monday prior to the opening day of the Scott County Fair. (Where local contests must be scheduled too late to make this deadline, an advance reservation must be arranged.)

Mail entries to: FFA Safe Tractor Operators Contest Scott County Fair

7151 190th St W, Jordan, MN 55352